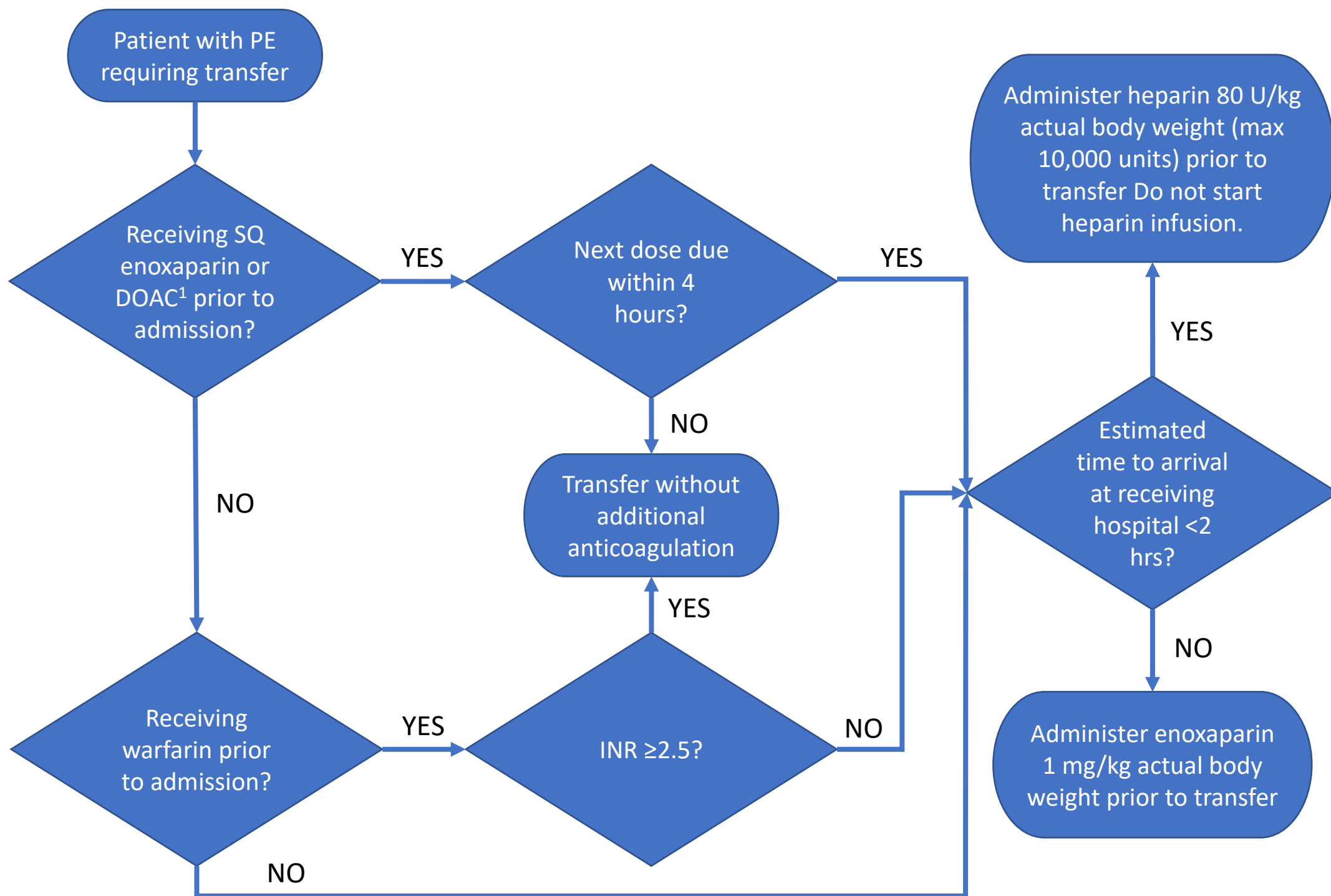
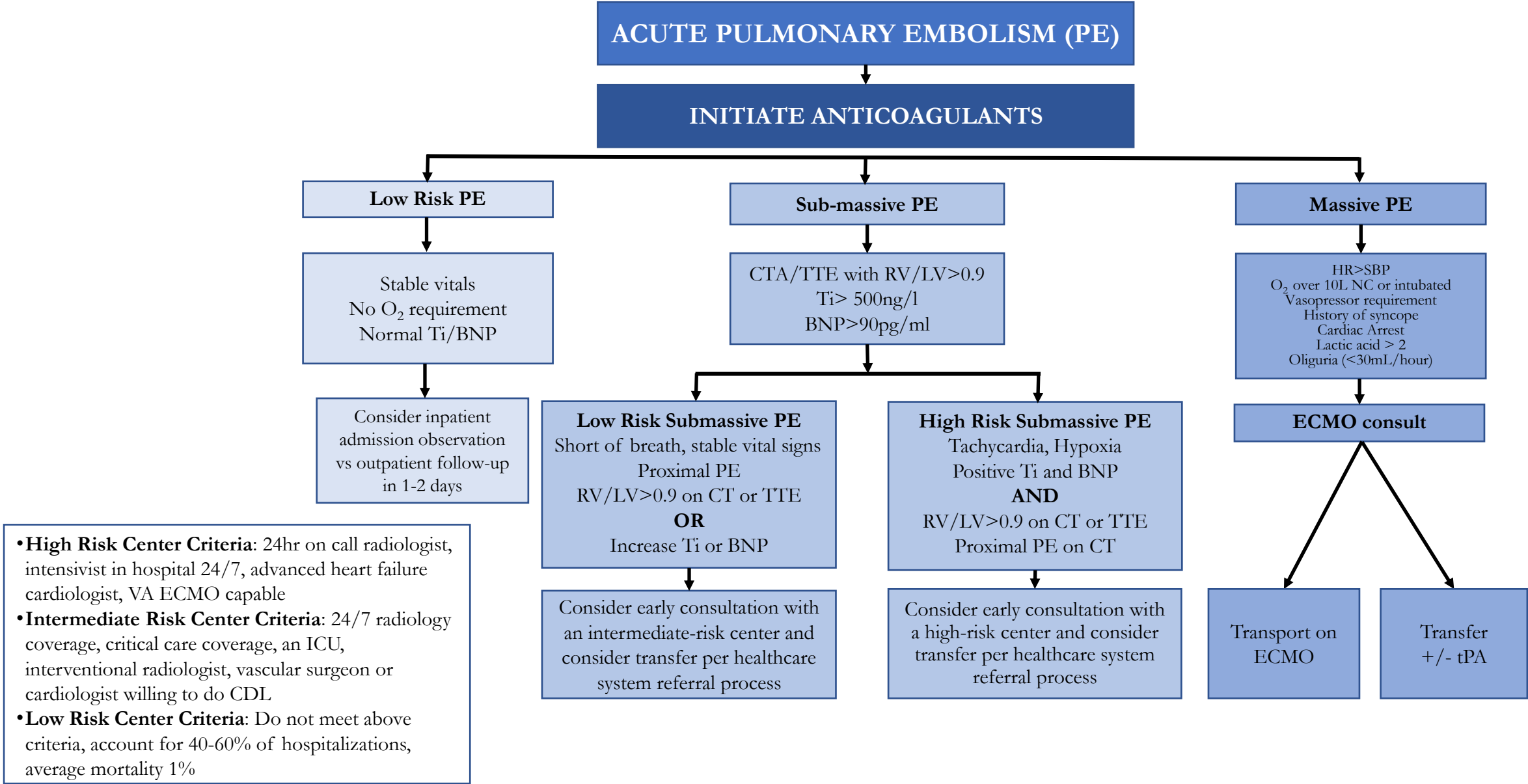


Anticoagulation for Pulmonary Embolism Algorithm

Anticoagulation for Pulmonary Embolism Whitepaper [\(click here\)](#)



Regional Pulmonary Embolism Guidelines



BNP = brain natriuretic peptide; CDL=catheter directed thrombolysis; CTA=CT Angiography; LV=left ventricle; PERT=pulmonary embolism response team; RV=right ventricle; SBP=systolic blood pressure; ST=systemic thrombolysis; Ti=high sensitivity troponin; TE=transthoracic echocardiogram