

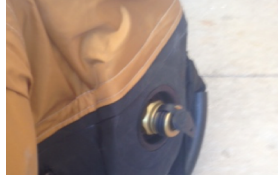
Zumro Tent Set-Up Procedure

(Note: colors of the equipment and hoses differs per facility)

1. Open carrying bag, roll it over and remove carrying bag.



2. Locate valve at the right corner of the front/Hot zone/dirty side. Press the valve in and connect the inflator.



3. Turn on the inflator and inflate the tent



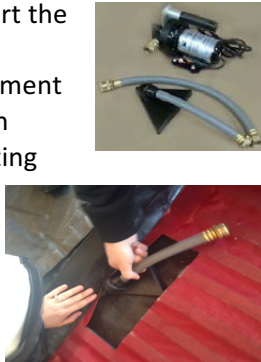
4. The tent will unfold by itself. Disconnect inflator when the frame is firm. Pull the valve to close. Stake base down (under windy conditions only).

5. Unroll and position collecting pools inside both sides of the tent.



Non-ambulatory Ambulatory

6. Insert the pump attachment in each collecting pool.



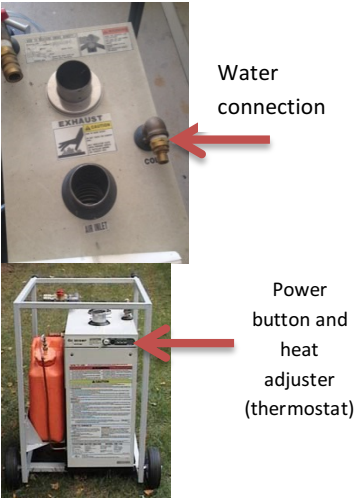
7. Connect the attachment with another hose to the sump pump



8. Connect the sump pump to the bladder (yellow/black or gray) and electricity.

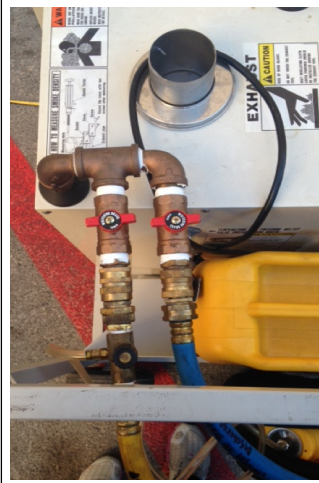


9. Water heater: Connect water source to the "Cold" connection on the top of the water heater. Heater runs on diesel fuel or propane.



10. Connect the water (blue) hoses to the water heater. Connect soap (yellow) hose to the soap solution connector and the heater.

Horizontal connection



Vertical connection



11. Fill the Solution Mix container with Dawn soap. Containers differ in color and shape.



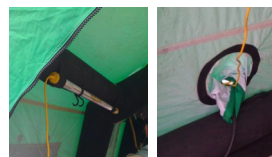
12. In line Heating system: Connect drum, Air Heater, and the fan together.



13. Attach the Propane tank to heater. Connect the heater to power. Turn the unit on.



14. Fasten light fixtures and run all electrical cords through tent openings



15. Put the roller system together and position on top of the collecting pool in the non-ambulatory section.



Zumro Tent Packing Procedures

(Note: colors of the equipment and hoses differs per facility)

1. Remove the roller system and any power from the tent. Roll out the collection pools and disconnect water(blue) and soap(yellow) hoses from water heater.



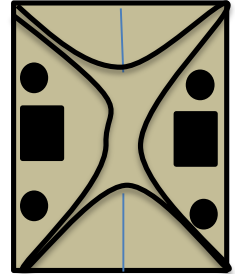
2. Connect Inflator hose to the tent's valve. Connect "deflate" side of the blower to the hose.



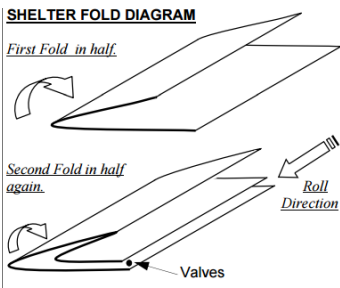
3. Push the valve to open and run inflator until all air is removed.



4. Place canopy and deflated frame within the "Floor Area" of the tent.



5. Fold the tent in half and then in half again (see diagram). Roll towards intake valve.



6. Place carrying bag over top of the folded tent.



7. Roll tent and carrying bag upside down.

8. Close carrying bag and place on cart.



Best Practice:

Sweep your tent floor and let it air dry prior to folding it to keep it clean and mold free.