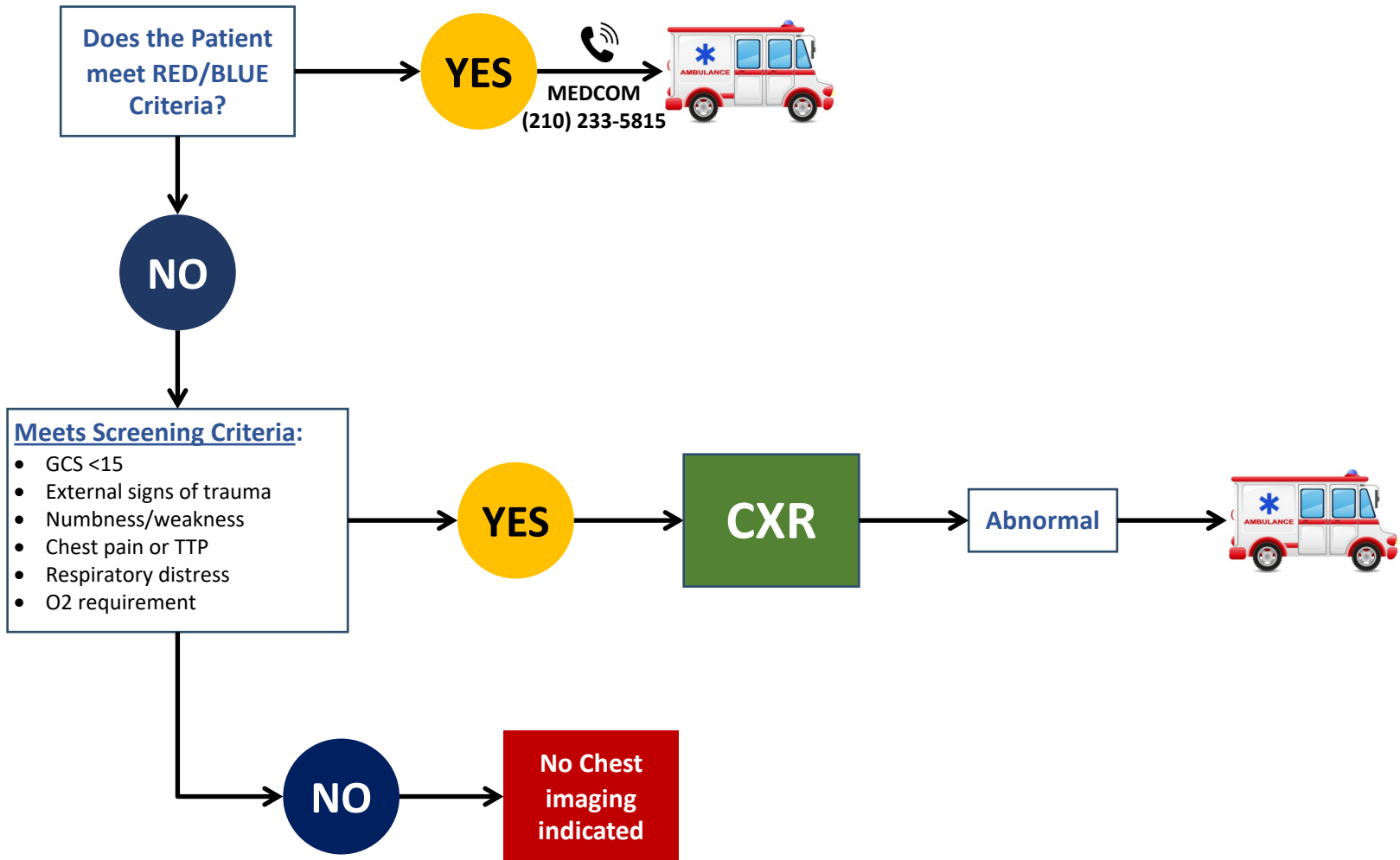


If any Red/Blue Criteria are met, refer to STRAC Pediatric Trauma Red/Blue Criteria for Transfer Guidelines

PEDIATRIC CHEST

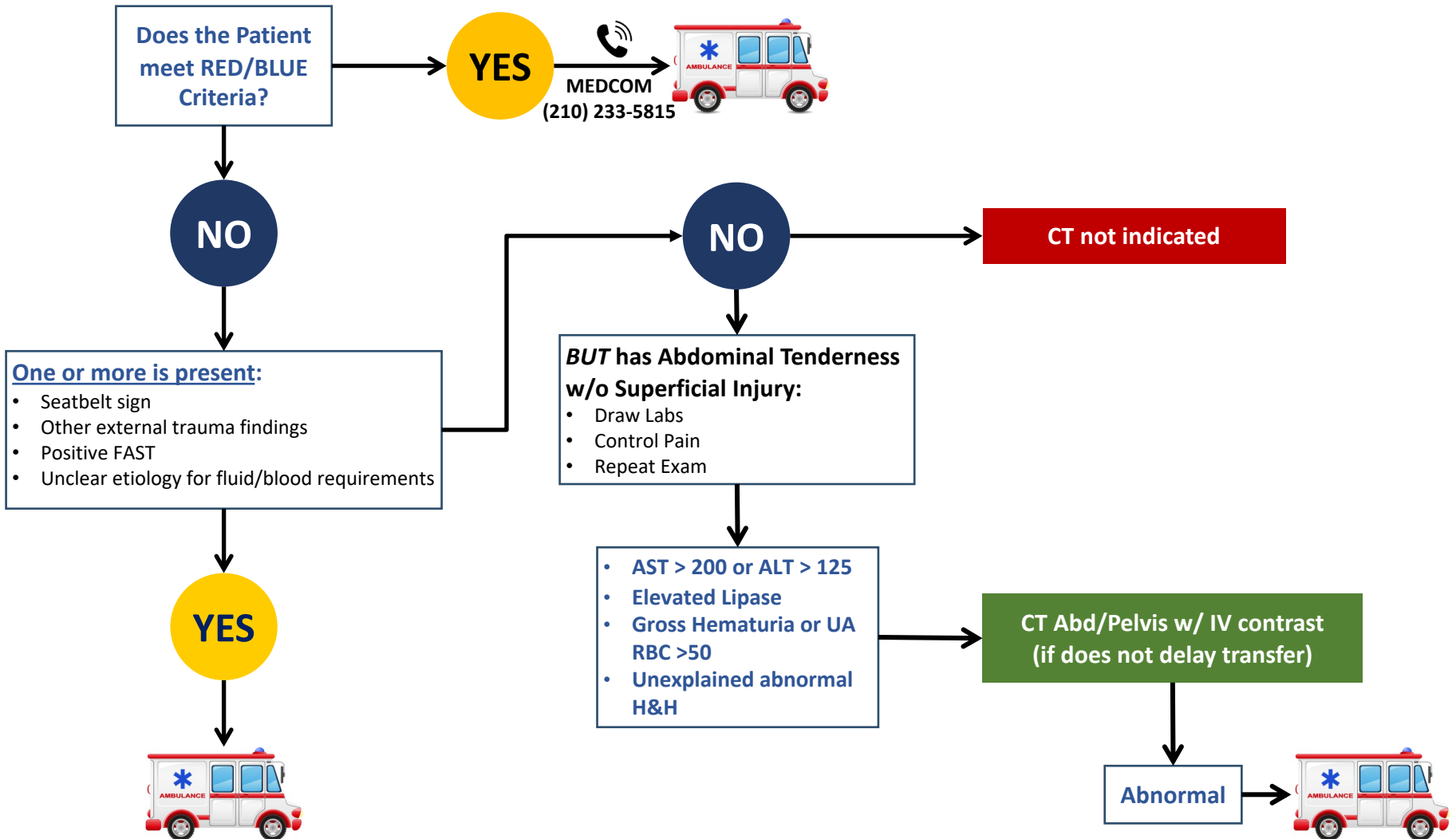
For concerns of ABUSE refer to the Regional Child Maltreatment Guidelines



If any Red/Blue Criteria are met, refer to STRAC Pediatric Trauma Red/Blue Criteria for Transfer Guidelines

PEDIATRIC ABDOMEN AND CHEST

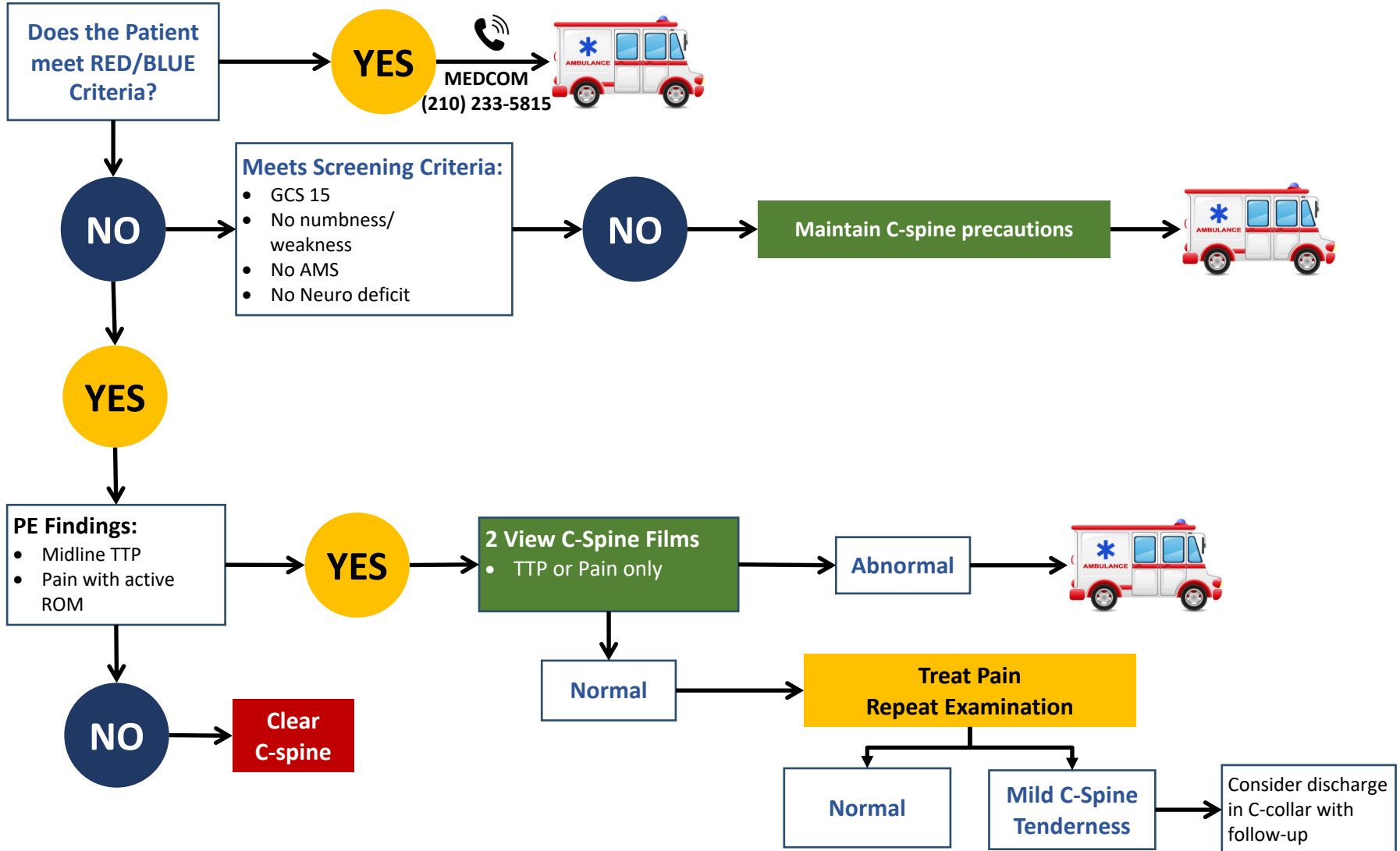
For concerns of ABUSE refer to the Regional Child Maltreatment Guidelines



If any Red/Blue Criteria are met, refer to STRAC Pediatric Trauma Red/Blue Criteria for Transfer Guidelines

PEDIATRIC CERVICAL SPINE

For concerns of ABUSE refer to the Regional Child Maltreatment Guidelines

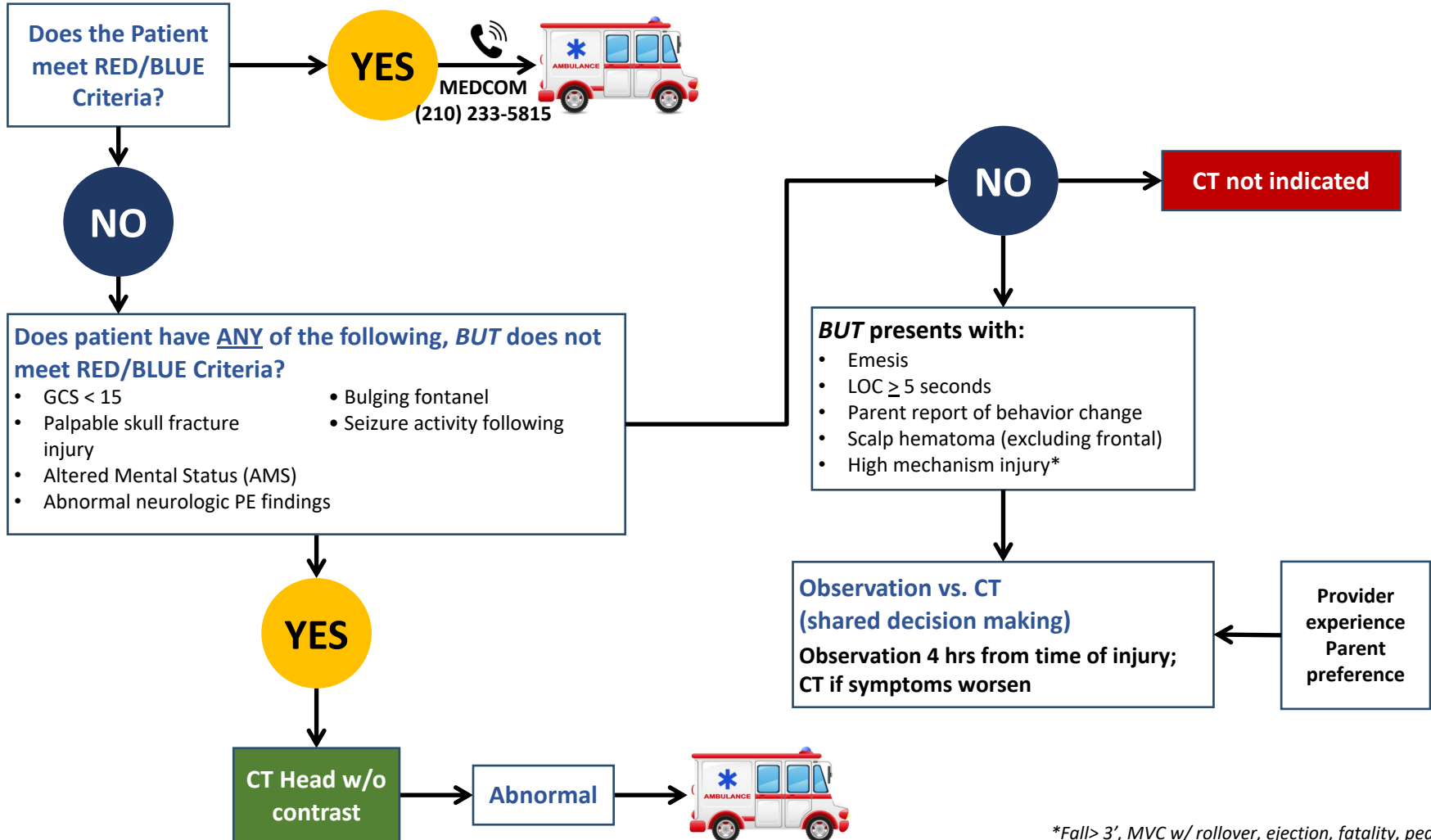


If any Red/Blue Criteria are met, refer to STRAC Pediatric Trauma Red/Blue Criteria for Transfer Guidelines

PEDIATRIC HEAD

Age < 2 years

For concerns of ABUSE refer to the Regional Child Maltreatment Guidelines



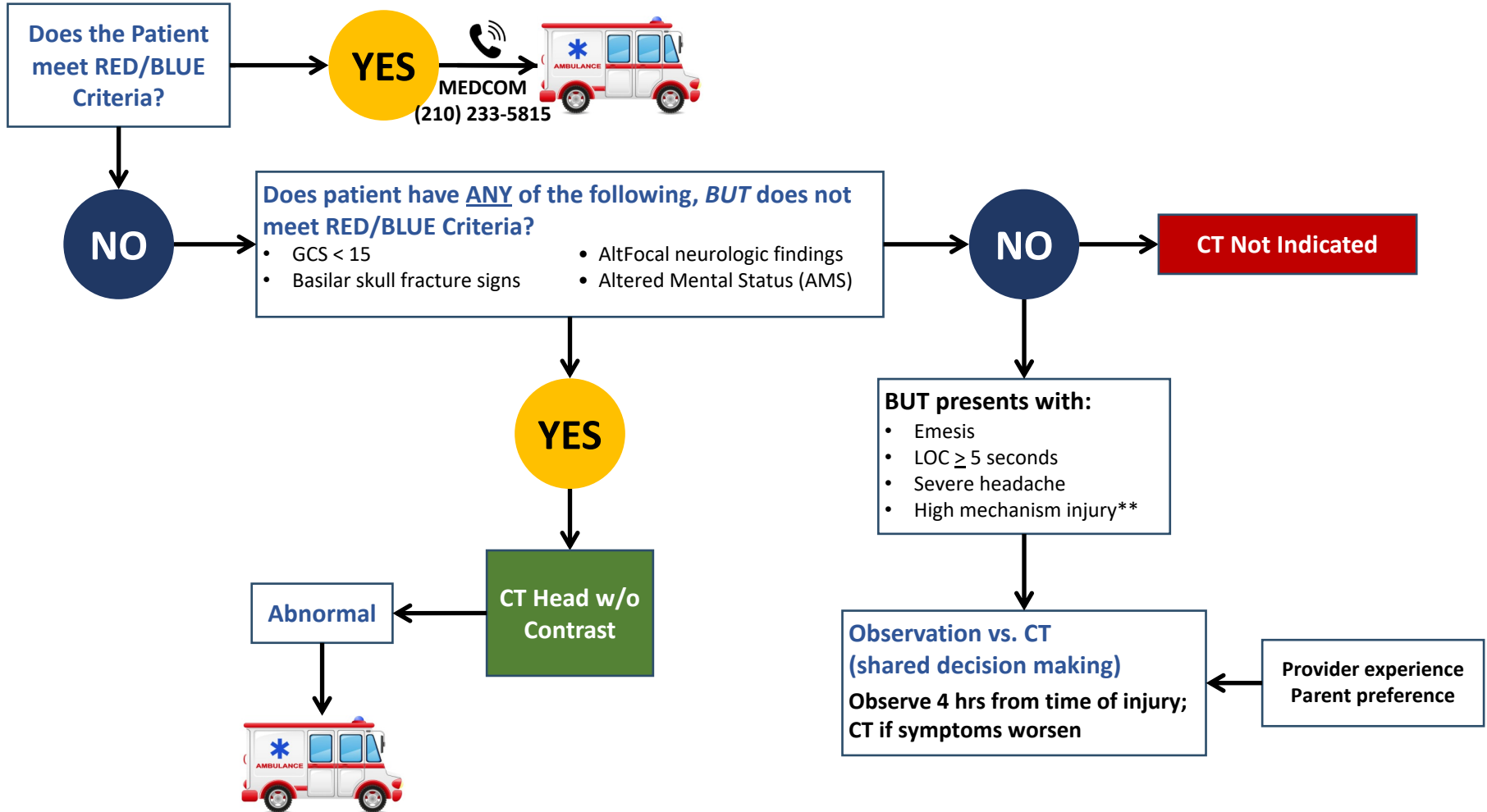
**Fall > 3', MVC w/ rollover, ejection, fatality, ped/bicyclist struck w/o helmet, struck by high-impact object*

If any Red/Blue Criteria are met, refer to STRAC Pediatric Trauma Red/Blue Criteria for Transfer Guidelines

PEDIATRIC HEAD

Age \geq 2 years - 17

For concerns of ABUSE refer to the Regional Child Maltreatment Guidelines



**Fall > 5', MVC w/ rollover, ejection, fatality, ped/bicyclist struck w/o helmet, struck by high-impact object